

# House Wine by Glass

## PREMIUM WINE

### TIMELESSLY PREMIUM WITH CORAVIN

#### RED

San Marzano F Negroamaro 2017, 220  
Puglia -Italy

## NATURAL WINE

#### RED

Karim Vionnet Beaujolais Villages 2020, 150  
Beaujolais - France

#### RED

Noble Vines 337, Cabernet Sauvignon 2016, 125  
Lodi - USA

Casa Marin Cartagena, Pinot Noir 2018, 125  
San Antonio Valley - Chile

#### WHITE

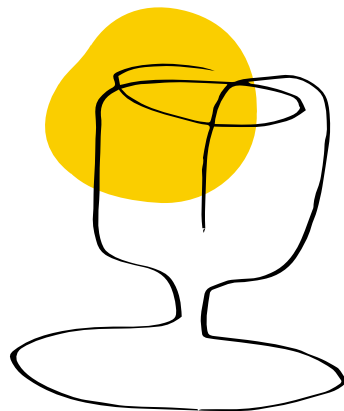
Alta Vista Vive, Torrontés 2018, 125  
Mendoza - Argentina

30 Mile, Chardonnay 2018, 125  
South Eastern - Australia

#### SPARKLING

La Gioiosa Prosecco Treviso NV, 125  
Veneto - Italy

*The vintage year changes periodically depending on the availability.*



# House Special Cocktail

	<b>Bubble Gum Soda Sour</b> <i>Bubble gum sous-vide vodka, Italian bitters, lemon, bubble gum syrup, soda</i>	<b>150</b>
	<b>Golden Martini</b> <i>Chamomile tea sous-vide gin, bianco vermouth, maraschino liqueur, agave syrup, soda</i>	<b>145</b>
	<b>Clover 50:50</b> <i>Rum, crème de cassis liqueur, evaporated milk, fresh milk, raspberry, lemon, raspberry syrup</i>	<b>150</b>
	<b>Cacao Parmesan</b> <i>Parmesan cheese sous-vide vodka, cacao white liqueur, vanilla syrup, coconut purée, egg white, lemon</i>	<b>150</b>
	<b>Floral Blossom</b> <i>Gin, vodka blend blood orange, mango and passion fruit, cysanthemum tea, agave syrup, lemon</i>	<b>145</b>
	<b>Klepon Naturel (Milk Clarified)</b> <i>Pandan sous-vide rum, vodka, homemade pandan syrup, coconut foam, grated palm sugar</i>	<b>130</b>
	<b>Jasumin Uisuki</b> <i>Whisky, ume honey liqueur, elderflower syrup, jasmine tea, honey, lemon</i>	<b>150</b>
	<b>La Petite Rita</b> <i>Lemongrass sous-vide tequila, coconut liqueur, lemon, ginger</i>	<b>150</b>
	<b>La Belle Miette</b> <i>Chamomile tea sous-vide rum, bianco vermouth, osmanthus syrup, apple juice, lemon</i>	<b>135</b>
	<b>Warhol's Banana</b> <i>Banana sous-vide whisky, cacao white liqueur, chocolate bitters, cinnamon syrup</i>	<b>135</b>

*\*Other classic cocktails are available upon request*

*All prices are subject to applicable tax and service charges*

# Beer

## DRAUGHT

Bintang (Large) 100

## BOTTLE

Bintang Crystal 55

Budweiser 85

Corona 85

Erdinger Weissbier 150

Erdinger Dunkel 150

Guinness Stout 55

Guinness Smooth 55

Sapporo 90

## CRAFT

Kura Kura Island Ale 105

Kura Kura Lager 105

## CIDER

Somersby Apple 75

## Mocktail

Lemon Lime Bitters	60
<i>Lemon, lime, bitters, soda</i>	
Dragon Fruit Yakult	50
<i>Dragonfruit, lychee syrup, fresh milk, yakult, mint leaves</i>	
Lychee Little Shanghai	50
<i>Lychee, lime, lychee syrup, soda</i>	

## Smoothie & Shake

Banana Pineapple Yoguberry	60
<i>Banana, pineapple, strawberry, greek yoghurt</i>	
Fruit Loops Shake	60
<i>Fruit loops, fresh milk, vanilla syrup, vanilla ice cream</i>	
Triple Berry Blend	60
<i>Blueberry, raspberry, strawberry, fresh milk, strawberry yoghurt, strawberry syrup, strawberry ice cream</i>	
Vanilla Choco Malt	60
<i>Chocolate wafer, fresh milk, chocolate malt, vanilla ice cream</i>	

## Juice

### COLD-PRESSED

Immune Booster	55
<i>Orange, carrot, ginger, agave</i>	
Kale-Fornia	55
<i>Kale, green apple, lemon, cucumber, pineapple</i>	
From The Garden	55
<i>Green apple, carrot, spinach, orange, honey</i>	
Watermelon Hydrate	55
<i>Watermelon, apple, mint</i>	
Good Digestion	55
<i>Green apple, pineapple, orange</i>	

### FRESH

Orange	45
Watermelon	45
Carrot	45
Pineapple	45
Strawberry	45
Additional fruit	+15

## Tea by Jing

Assam Breakfast	40
Blackcurrant and Hibiscus	40
Earl Grey	40
Whole Peppermint	40

## House Special Tea

Purple Lady	55
<i>Butterfly pea tea, peach syrup, passion fruit syrup, lemon sorbet</i>	
Elderflower Garden	50
<i>Tea, elderflower syrup, flower ice cube</i>	
Passion Lemonade	50
<i>Tea, lemon, orange, passion fruit purée, passion fruit syrup</i>	

## Coffee

### BLACK

Espresso	35
Americano	35
Long Black	35
Extra shot	+5

### MILK

Caffé Latte	45
Cappuccino	40
Flat White	40
Piccolo	38
Macchiato	38
Mocha	50

### COLD


Iced Black	40
Iced Cappuccino	50
Iced Caffé Latte	50
Iced Mocha	55
Affogato	55

# House Special Coffee

Black Forest Mochaccino	50
<i>Double espresso, chocolate syrup, strawberry syrup, non-dairy creamer, mix of evaporated, condensed, and fresh milk</i>	
Caffé Cubes Latte	50
<i>Espresso cubes served with mix of evaporated, condensed, and fresh milk</i>	
Brown Sugar Latte (Hot/Iced)	45
<i>Double ristretto, brown sugar syrup, non-dairy creamer, fresh milk</i>	
Coffee Jelly	45
<i>Espresso, homemade coffee jelly, white chocolate syrup, fresh milk</i>	
Espresso Elderflower Shake	45
<i>Italian-style coffee, elderflower syrup</i>	
Pandan Latte	45
<i>Double espresso, homemade pandan syrup, mix of evaporated, condensed, and fresh milk</i>	
Salted Caramel Macchiato	45
<i>Double espresso, vanilla syrup, non-dairy creamer, caramel sauce, fresh milk</i>	

## PLANT-BASED

Cinnamon Maple Latte	60
<i>Espresso, Oatly milk, maple syrup, cinnamon</i>	
Iced Caramel Coconut Latte	60
<i>Espresso, Oatly milk, homemade caramel coconut syrup</i>	

\*Change to  for other milk-contained coffee menu +20.

# Spirit Selection

## SINGLE MALT WHISKY

### Highland

	<i>Single / Bottle</i>
Glengoyne 12 YO	210 / 2900
Glengoyne 15 YO	260 / 3800
Glengoyne 18 YO	295 / 4500
Oban 14 YO	210 / 2900
The Dalmore 12 YO	210 / 2900
Tullibardine 228 Burgundy Finish	210 / 2900

### Island

Highland Park 12 YO	180 / 2500
---------------------	------------

### Speyside

The Glenlivet Solera Vatted	160 / 2700
The Glenlivet 12 YO	125 / 1800
The Glenlivet 15 YO	180 / 2500
The Glenlivet 18 YO	250 / 3600
The Macallan 12 YO Triple Cask	215 / 3000
The Macallan 12 YO Double Cask	215 / 3000
The Macallan 12 YO Sherry Oak	215 / 3000
The Singleton 12 YO	150 / 2200
The Singleton 15 YO	220 / 3100
The Singleton 18 YO	270 / 4000
The Balvenie 12 YO	180 / 2500
The Balvenie 14 YO	205 / 2800
The Balvenie 16 YO	255 / 3700
The Balvenie 17 YO	280 / 4200
Glenfarclas Heritage	170 / 2400
Glenfarclas 12 YO	205 / 2800
Glenfarclas 15 YO	240 / 3400
Glenfiddich 12 YO	170 / 2400
Glenfiddich 15 YO	185 / 2600
Glenfiddich 18 YO	215 / 3000

### Lowland

Auchentoshan Three Wood	210 / 2900
Auchentoshan 12 YO	220 / 3100
Auchentoshan 18 YO	285 / 4300

**Islay**

Bowmore 12 YO	<i>205 / 2800</i>
Bowmore 15 YO	<i>215 / 3000</i>
Lagavulin 16 YO	<i>210 / 2900</i>
Laphroaig 10 YO	<i>185 / 2600</i>

**WHISK(E)Y****Scotch**

Ballantine's Finest	<i>110 / 1500</i>
Chivas Regal Extra	<i>145 / 2100</i>
Chivas Regal Mizunara	<i>150 / 2200</i>
Chivas Regal 18 YO	<i>225 / 3200</i>
Monkey Shoulder	<i>140 / 2000</i>
Johnnie Walker Double Black	<i>160 / 2300</i>
The Naked Grouse	<i>140 / 2000</i>

**American**

Bulleit Bourbon	<i>130 / 1900</i>
Bulleit Rye	<i>145 / 2100</i>
Gentleman Jack	<i>135 / 2000</i>
Jack Daniel's	<i>115 / 1600</i>
Jim Beam Original	<i>110 / 1500</i>
Knob Creek	<i>140 / 2000</i>
Maker's Mark	<i>130 / 1900</i>
Sazerac Rye	<i>160 / 2300</i>

**Irish**

Jameson	<i>115 / 1600</i>
Jameson Caskmates	<i>125 / 1800</i>
Jameson Black Barrel	<i>130 / 1900</i>
Old Bushmills	<i>125 / 1800</i>
Teeling Small Batch	<i>110 / 1500</i>
Teeling Single Malt	<i>145 / 2100</i>

**Canadian**

Canadian Club	<i>120 / 1600</i>
Crown Royal	<i>120 / 1600</i>



**Japanese**

Iwai Original	<i>110 / 1500</i>
Kura Whisky Rum Cask	<i>130 / 1900</i>
Kura 8 YO White Oak	<i>200 / 2700</i>
Kura 12 YO White Oak	<i>210 / 2900</i>
Nikka Blended	<i>150 / 2200</i>
Nikka Coffey Grain	<i>205 / 2800</i>
Nikka Pure Malt Black	<i>185 / 2600</i>
Suntory Kakubin	<i>110 / 1500</i>
The Chita Suntory	<i>200 / 2700</i>
Yamazakura Fine Blended	<i>110 / 1500</i>

**GIN***Single / Bottle*

Beefeater	<i>105 / 1400</i>
Monkey 47	<i>200 / 2000</i>
Monkey 47 Sloe	<i>210 / 2100</i>
Bloom	<i>145 / 2100</i>
Bobby's	<i>125 / 1800</i>
Bombay Sapphire	<i>110 / 1500</i>
Cannonball	<i>140 / 2000</i>
Greenall's	<i>115 / 1600</i>
Hendrick's	<i>140 / 2000</i>
Komasa	<i>170 / 1800</i>
Lola & Vera	<i>205 / 2800</i>
Mom	<i>140 / 2000</i>
Nordés	<i>115 / 1600</i>
Roku	<i>130 / 1900</i>
Sabatini	<i>210 / 2900</i>
Sipsmith London Dry	<i>120 / 1700</i>
Sipsmith Sloe	<i>150 / 1900</i>
Skin	<i>290 / 2900</i>
Tanqueray No.10	<i>150 / 2200</i>
The Botanist	<i>120 / 1700</i>
The London No.1	<i>140 / 2000</i>
Wint & Lila	<i>120 / 1700</i>

## TEQUILA

Avión Silver	140 / 2000
Avión Reposado	150 / 2200
1800 Silver	120 / 1700
1800 Añejo	140 / 2000
Casamigos Blanco	- / 2800
Casamigos Reposado	- / 3000
Casamigos Añejo	- / 3300
Clase Azul Reposado	- / 5600
Herradura Plata	130 / 1900
Herradura Reposado	150 / 2200
Herradura Añejo	170 / 2400
Jose Cuervo Tradicional Silver	115 / 1600
Jose Cuervo Tradicional Reposado	140 / 2000
Jose Cuervo Reserva de La Familia Platino	210 / 2900

## MEZCAL

*Single / Bottle*

Machetazo Cupreata	145 / 2100
Machetazo Espadin	145 / 2100
Machetazo Salmiana	145 / 2100
Casamigos Joven	- / 3300

## VODKA

Absolut Elyx	115 / 1600
Belvedere	125 / 1800
Círoc	125 / 1800
Grey Goose	130 / 1900
Haku	130 / 1900
Stolichnaya	110 / 1500

## RUM & CACHAÇA

Havana Club Añejo 3 Años	105 / 1400
Black Tears	110 / 1500
Diplomático Reserva Exclusiva	200 / 2700
Myers's Original Dark	120 / 1700
Nusa Caña	110 / 1500
Sagatiba Pura	110 / 1500
Sailor Jerry	110 / 1500

## **COGNAC**

Martell NCF	<i>170 / 2400</i>
Martell VSOP Red Barrels	<i>170 / 2400</i>
Martell Cordon Bleu	<i>350 / 4500</i>
Martell XO	<i>- / 5500</i>
Hennessy VSOP	<i>210 / 2900</i>
Hennessy XO	<i>360 / 4600</i>
Rémy Martin VSOP	<i>185 / 2600</i>
Rémy Martin Club	<i>210 / 2900</i>
Rémy Martin XO	<i>370 / 4700</i>

## **LIQUEUR**

Malibu	<i>105 / 1400</i>
Kahlúa	<i>105 / 1400</i>
Baileys	<i>110 / 1500</i>
Cointreau	<i>110 / 1500</i>
Fireball	<i>110 / 1500</i>
Jack Daniel's Tennessee Fire	<i>125 / 1800</i>
Jack Daniel's Tennessee Honey	<i>125 / 1800</i>
Jägermeister Ice Cold	<i>115 / 1600</i>
Midori	<i>110 / 1500</i>
Southern Comfort	<i>110 / 1500</i>
Vaccari Sambuca	<i>110 / 1500</i>
X-Rated	<i>110 / 1500</i>

## **APERITIF**

Aperol	<i>100 / 1300</i>
Campari	<i>105 / 1400</i>
Mancino Bianco Ambrato	<i>105 / 1400</i>
Mancino Rosso Amaranto	<i>105 / 1400</i>
Mancino Secco	<i>105 / 1400</i>

## **DIGESTIF**

Fernet-Branca	<i>100 / 1300</i>
Branca Menta	<i>100 / 1300</i>

## Natural & Sparkling Water

Aqua Reflections Still (380ml)	35
Aqua Reflections Still (750ml)	60
Aqua Reflections Sparkling (380ml)	35

## Others

<b>Flavored Iced Tea</b>	<b>40</b>
<i>Lemon / lychee / passion fruit / peach / strawberry</i>	
Iced Tea	30
Chocolate (Hot/Iced)	40 / 45
Coca Cola	30
Ginger Ale	30
Pokka Green Tea	30
Sprite	30
Soda Water	30
Tonic Water	30

## Energy Drink

Red Bull	40
----------	----

# Cigar

Cohiba Robustos	640
Montecristo No.4	320
Montecristo Edmundo	415
Partagas Serie D No.4	395
Partagas Serie P No.2	500
Ramon Allones Specially Selected	320
Romeo Y Julieta No.1	280